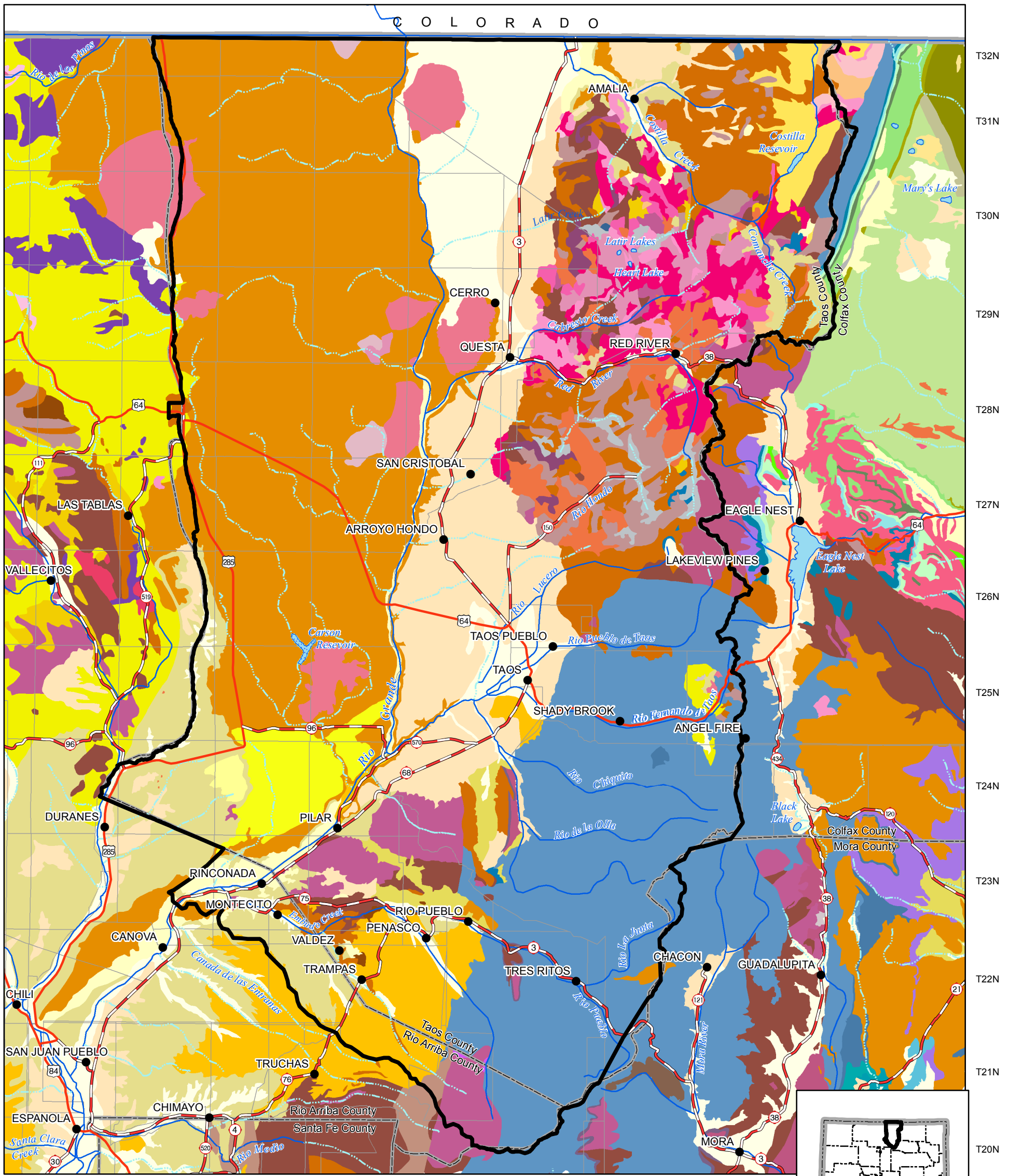


Taos Regional Water Plan Geology

R08E R09E R10E R11E R12E R13E R14E R15E R16E R17E



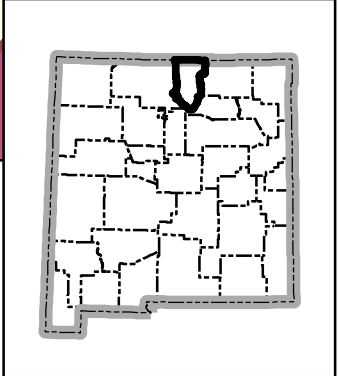
T32N
T31N
T30N
T29N
T28N
T27N
T26N
T25N
T24N
T23N
T22N
T21N
T20N

Legend

- City or Town
- ▭ Planning Region
- ▬ County Boundary
- ▬ Perennial river
- ▬ Intermittent stream
- ▬ Intermittent water body
- ▬ Perennial water body
- ▬ U.S. Highway
- ▬ State Road or Highway
- ▬ Township/Range

Geology

IP	Pct	Thb	Tuim
IPs	Pg	Ti	Turf
TRc	Psg	Tif	Turp
TRcu	Pz	Tla	Tus
TRs	QTb	Tlp	Tuv
J	QTp	Tlrp	Tv
Jm	QTs	Tlv	X
Kc	QTsf	Tnb	Xm
Kdg	Qa	Tnr	Xmo
Kgc	Qd	Tos	Xms
Kpn	Qe	Tpc	Xmu
Ku	Qe/Tnb	Tps	Xp
Kvt	Ql	Tsf	YXp
M	Qp	Tual	Yp
PIP	TKpr	Tuau	ds
PIPsc	TKr	Tui	



Produced by New Mexico Water Resources Research Institute, May 2006.

Base map prepared by the U.S. Geological Survey

Compiled from digital data provided by the New Mexico Resource Geographic Information System (RGIS). Original base maps digitized from 1:500,000 mylar sheets and 100,000 paper maps for New Mexico. These data meets National Mapping Accuracy Standards for 1:500,000 and 1:100,000 scale maps. Shaded relief provided by RGIS and is based on 1:250,000 Digital Elevation Models (DEMs) created by the U.S. Geological Survey. Boundary of the Taos Regional Water Plan is based on county lines and surface drainage divides.

Horizontal accuracy: At the scale of 1:650,000 at least 90 percent of the points tested are within 1/30th inch (0.0333 inch), or within 547 ground meters, of their true location.

Projection: Universal Transverse Mercator, Zone 13, Units meters, NAD83.

