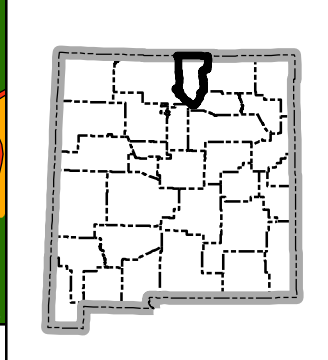
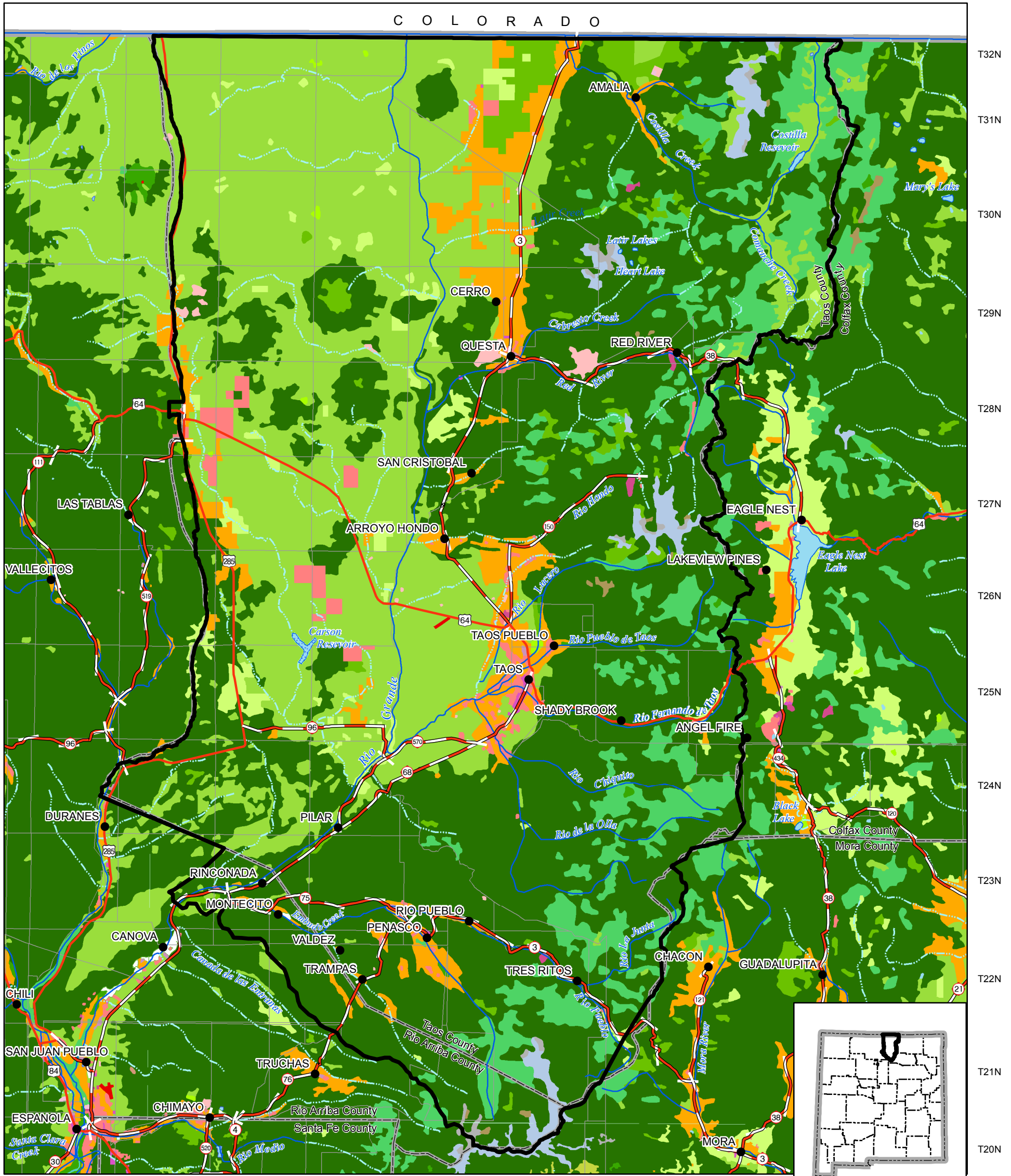


# Taos Regional Water Plan

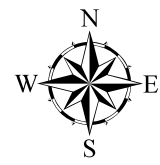
## Land Use

R08E R09E R10E R11E R12E R13E R14E R15E R16E R17E

C O L O R A D O



<b>Legend</b>		<b>Land Use</b>	
● City or Town	■ Bare Exposed Rock	■ Mixed Forest Land	■ Residential
▭ Planning Region	■ Bare Ground Tundra	■ Mixed Rangeland	■ Sandy Areas Other Than Beaches
— County Boundary	■ Commercial/Services	■ Mixed Trunda	■ Shrub-Brushland
— Perennial river	■ Cropland/Pasture	■ Mixed Urban or Built-up Land	■ Rangeland
— Intermittent stream	■ Deciduous Forest Land	■ Nonforested Wetland	■ Streams and Canals
■ Intermittent water body	■ Evergreen Forest Land	■ Orchards, Groves, etc	■ Strip Mines, Quarries, and Gravel Pits
■ Perennial water body	■ Herbaceous Rangeland	■ Other Agricultural Land	■ Transitional Areas
— U.S. Highway	■ Herbaceous Tundra	■ Other Urban or Built-up Land	■ Transportation, Communications and Utilities
— State Road or Highway	■ Industrial		
— Township/Range			



Produced by New Mexico Water Resources Research Institute, May 2006.

Base map prepared by the U.S. Geological Survey

Compiled from digital data provided by the New Mexico Resource Geographic Information System (RGIS). Original base maps digitized from 1:500,000 mylar sheets and 100,000 paper maps for New Mexico. These data meets National Mapping Accuracy Standards for 1:500,000 and 1:100,000 scale maps. Shaded relief provided by RGIS and is based on 1:250,000 Digital Elevation Models (DEMs) created by the U.S. Geological Survey. Boundary of the Taos Regional Water Plan is based on county lines and surface drainage divides.

Horizontal accuracy: At the scale of 1:650,000 at least 90 percent of the points tested are within 1/30th inch (0.0333 inch), or within 547 ground meters, of their true location.

Projection: Universal Transverse Mercator, Zone 13, Units meters, NAD83.

