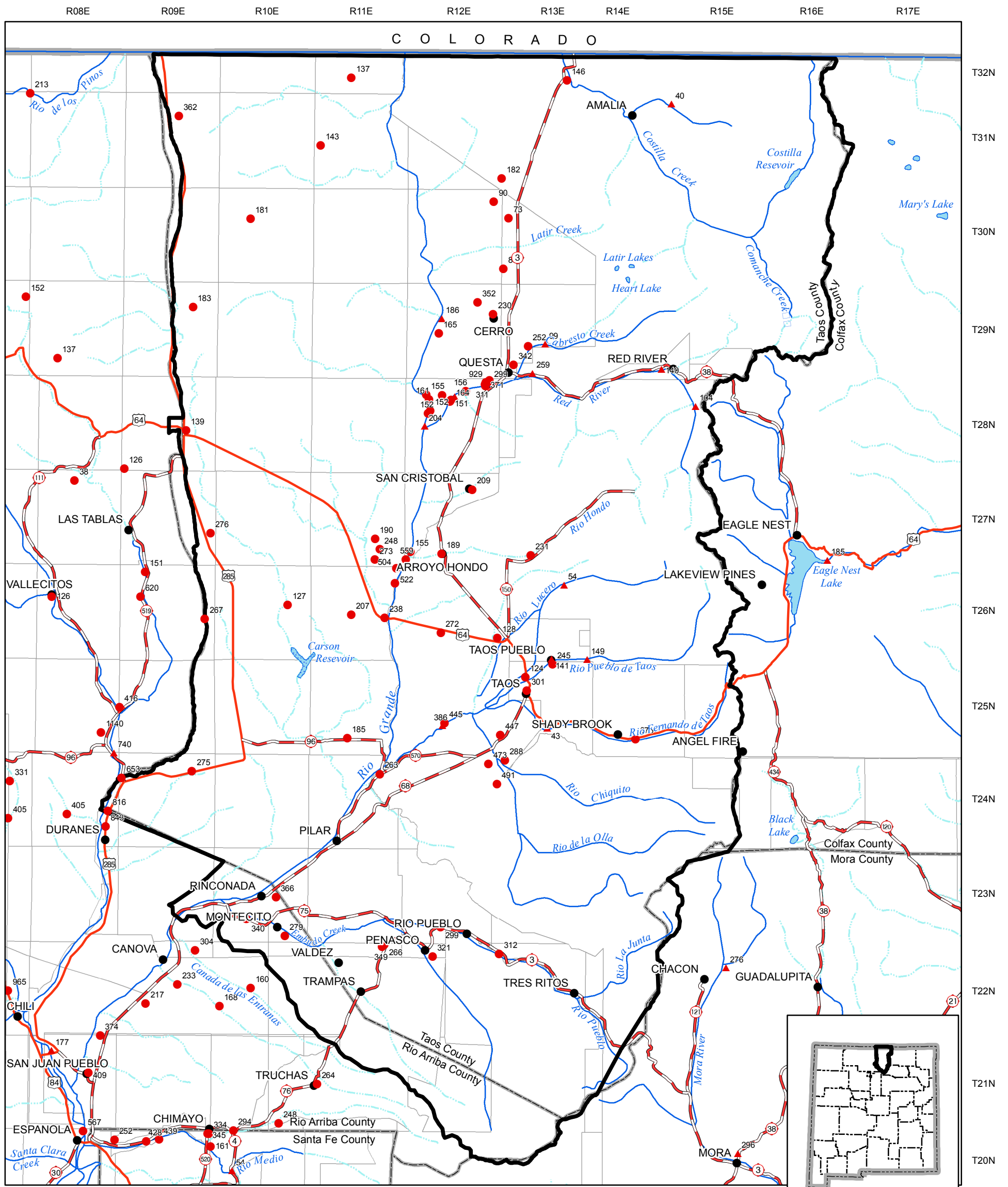


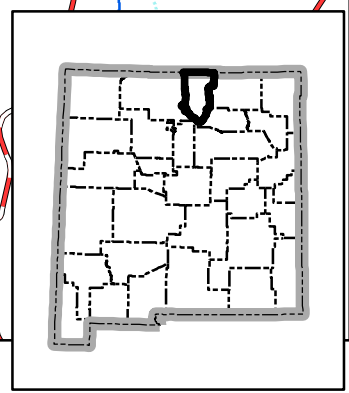
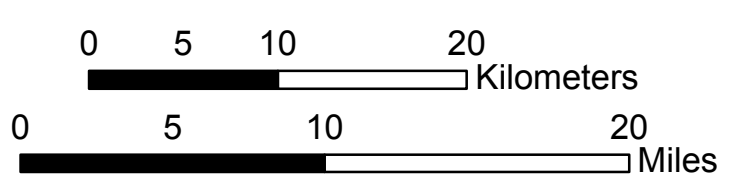
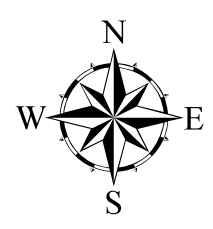
Taos Regional Water Plan

Water Quality



Legend

- City or Town
- ▭ Planning Region
- County Boundary
- Perennial river
- Intermittent stream
- Intermittent water body
- Perennial water body
- U.S. Highway
- State Road or Highway
- Township/Range
- ▲ Surface Water TDS (Filtered) mg/L
- Groundwater/Springs TDS (Filtered) mg/L



Produced by New Mexico Water Resources Research Institute, May 2006.

Base map prepared by the U.S. Geological Survey

Compiled from digital data provided by the New Mexico Resource Geographic Information System Program (RGIS). Original base maps digitized from 1:500,000 mylar sheets and 100,000 paper maps for New Mexico. These data meets National Mapping Accuracy Standards for 1:500,000 and 1:100,000 scale maps. Shaded relief provided by RGIS and is based on 1:250,000 Digital Elevation Models (DEMs) created by the U.S. Geological Survey. Boundary of the Taos Regional Water Plan is based on county lines and surface drainage divides.

Horizontal accuracy: At the scale of 1:650,000 at least 90 percent of the points tested are within 1/30th inch (0.0333 inch), or within 547 ground meters, of their true location.

Projection: Universal Transverse Mercator, Zone 13, Units meters, NAD83.