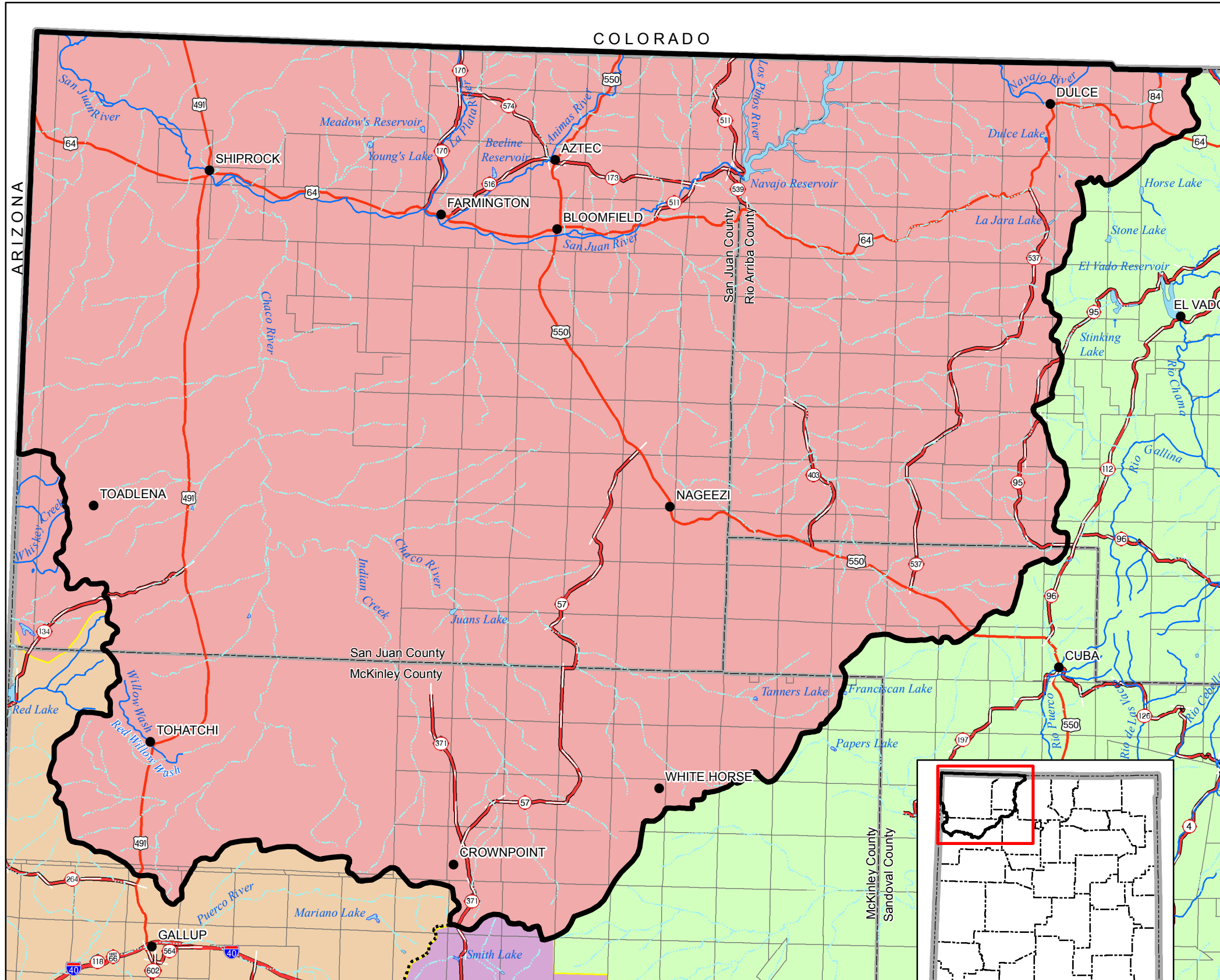


# San Juan River Basin Water Plan

## Underground Water Basins

R18W R17W R16W R15W R14W R13W R12W R11W R10W R09W R08W R07W R06W R05W R04W R03W R02W R01W R01E

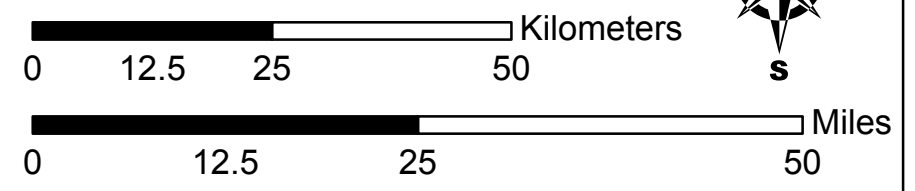


### Legend

- City or Town
- ..... Continental Divide
- Interstate
- State Highway
- U.S. Highway
- Perennial Stream
- Intermittent Stream
- Perennial water body
- Intermittent Water Body
- Planning Region
- State Boundary
- County Boundary
- Township/Range

### Water Basins

- Bluewater
- Gallup
- Rio Grande
- San Juan



Produced by New Mexico Water Resources Research Institute, May 2006

Base map prepared by the U.S. Geological Survey

Compiled from digital data provided by the New Mexico Resource Geographic Information System Program (RGIS). Original base maps digitized from 1:500,000 mylar sheets and 100,000 paper maps for New Mexico. These data meets National Mapping Accuracy Standards for 1:500,000 and 1:100,000 scale maps. Shaded relief provided by RGIS and is based on 1:250,000 Digital Elevation Models (DEMs) created by the U.S. Geological Survey. Boundary of the San Juan Planning Region is based on surface drainage divides.

Projection: Universal Transverse Mercator, Zone 13, Units meters, NAD83.

