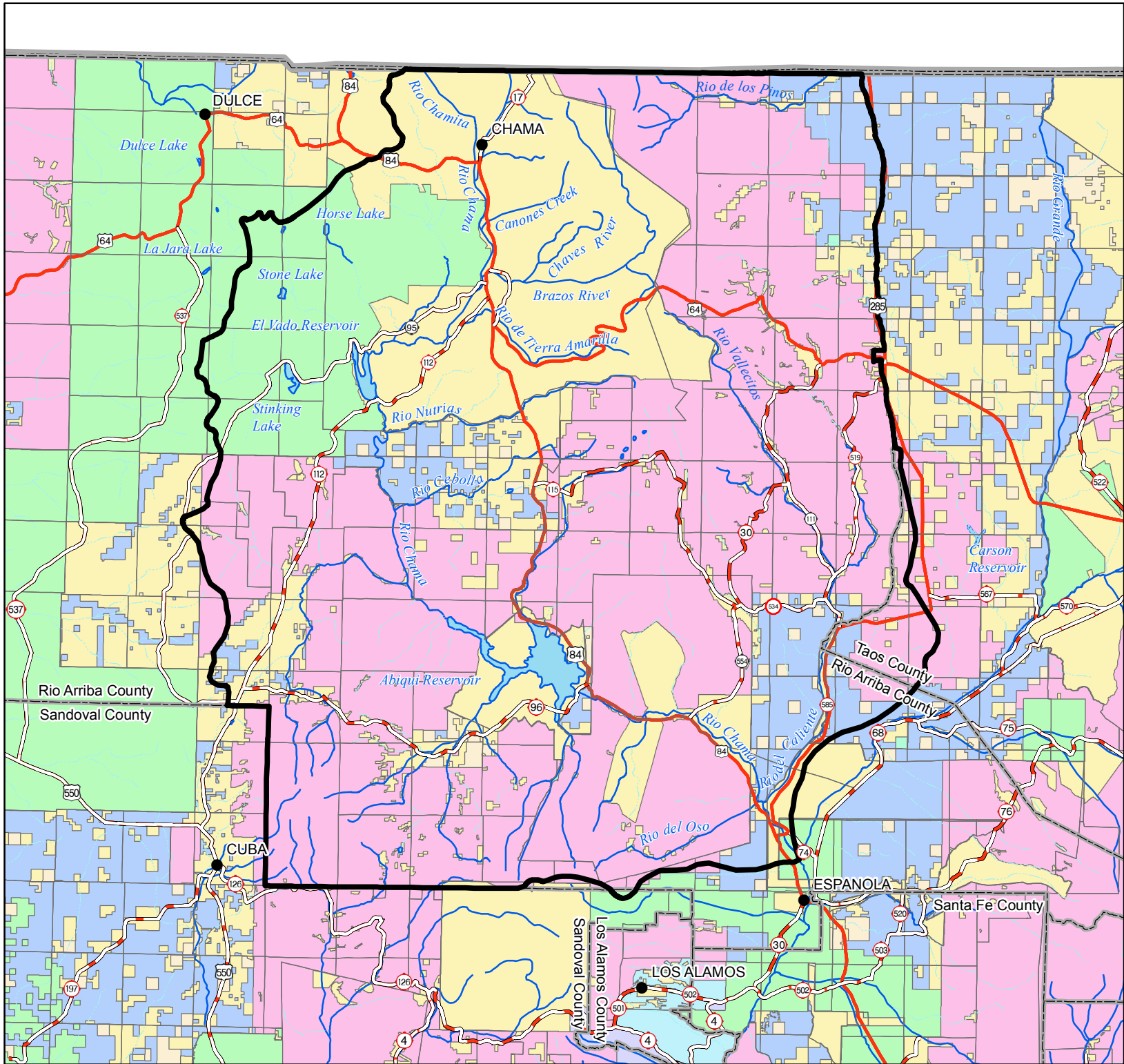


Rio Arriba Water Plan Region

Land Ownership

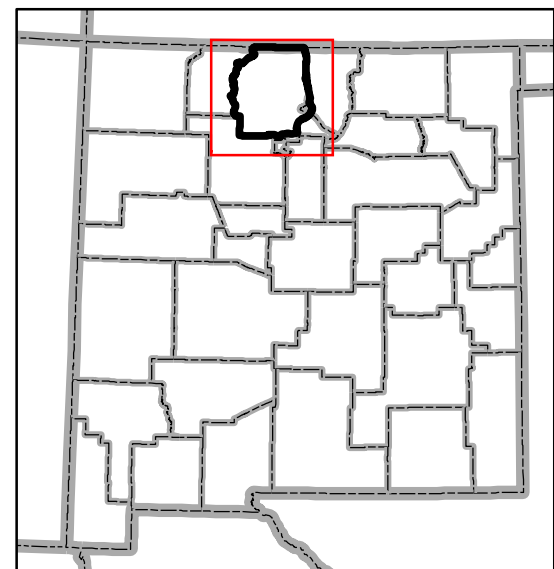
R04W R03W R02W R01W R01E R02E R03E R04E R05E R06E R07E R08E R09E R10E R11E R12E



T32N
T31N
T30N
T29N
T28N
T27N
T26N
T25N
T24N
T23N
T22N
T21N
T20N
T19N
T18N

Legend

• City or Town	Private
— 550 — U.S. Highway	Bureau of Land Management
— 197 — State/Other Highway	Department of Agriculture
— 40 — Interstate	Department of Energy
— State Boundary	Fish and Wildlife Services
— County Boundary	State
— Township/Range	Bureau of Reclamation
~ Perennial River	Military
~ Intermittent Stream	Forest Service
~ Perennial water body	Indian/ Tribal
~ Intermittent water body	National Park Service
▭ Planning Region	

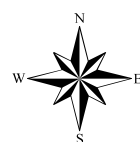


Produced by New Mexico Water Resources Research Institute, January 2001
Base map prepared by the U.S. Geological Survey

Compiled from digital data provided by the New Mexico Resource Geographic Information System Program (RGIS).
Original base maps digitized from 1:500,000 mylar sheets and 100,000 paper maps for New Mexico. These data meets National Mapping Accuracy Standards for 1:500,000 and 1:100,000 scale maps. Shaded relief provided by RGIS and is based on 1:250,000 Digital Elevation Models (DEMs) created by the U.S. Geological Survey. Boundary of the Rio Chama Water Planning Region is based on New Mexico county boundaries, and surface drainage divides. The cadastral accuracy of the county boundaries where verified by the use of 1:100,000 Public Land Survey System (PLSS) from RGIS.

Horizontal accuracy: At the scale of 1:500,000 at least 90 percent of the points tested are within 1/30th inch (0.033 inch), or within 423 ground meters, of their true location.
Projection: Universal Transverse Mercator, Zone 13, Units meters, NAD83.

0 12.5 25 50 Kilometers



0 12.5 25 50 Miles