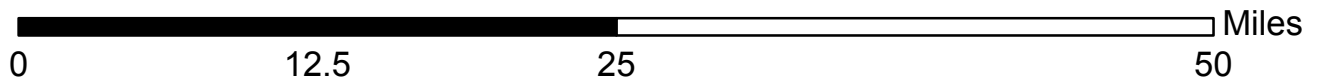
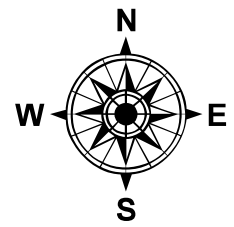
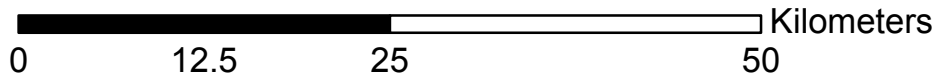
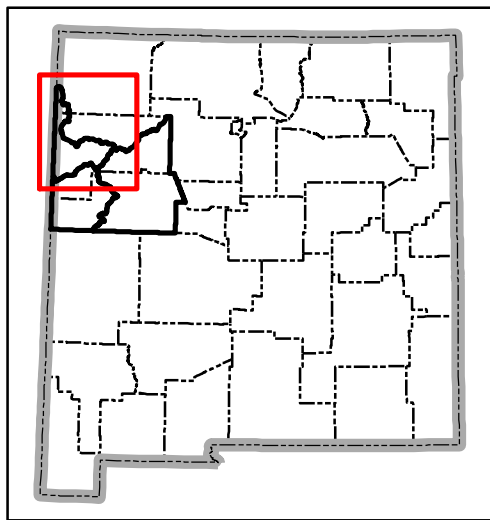
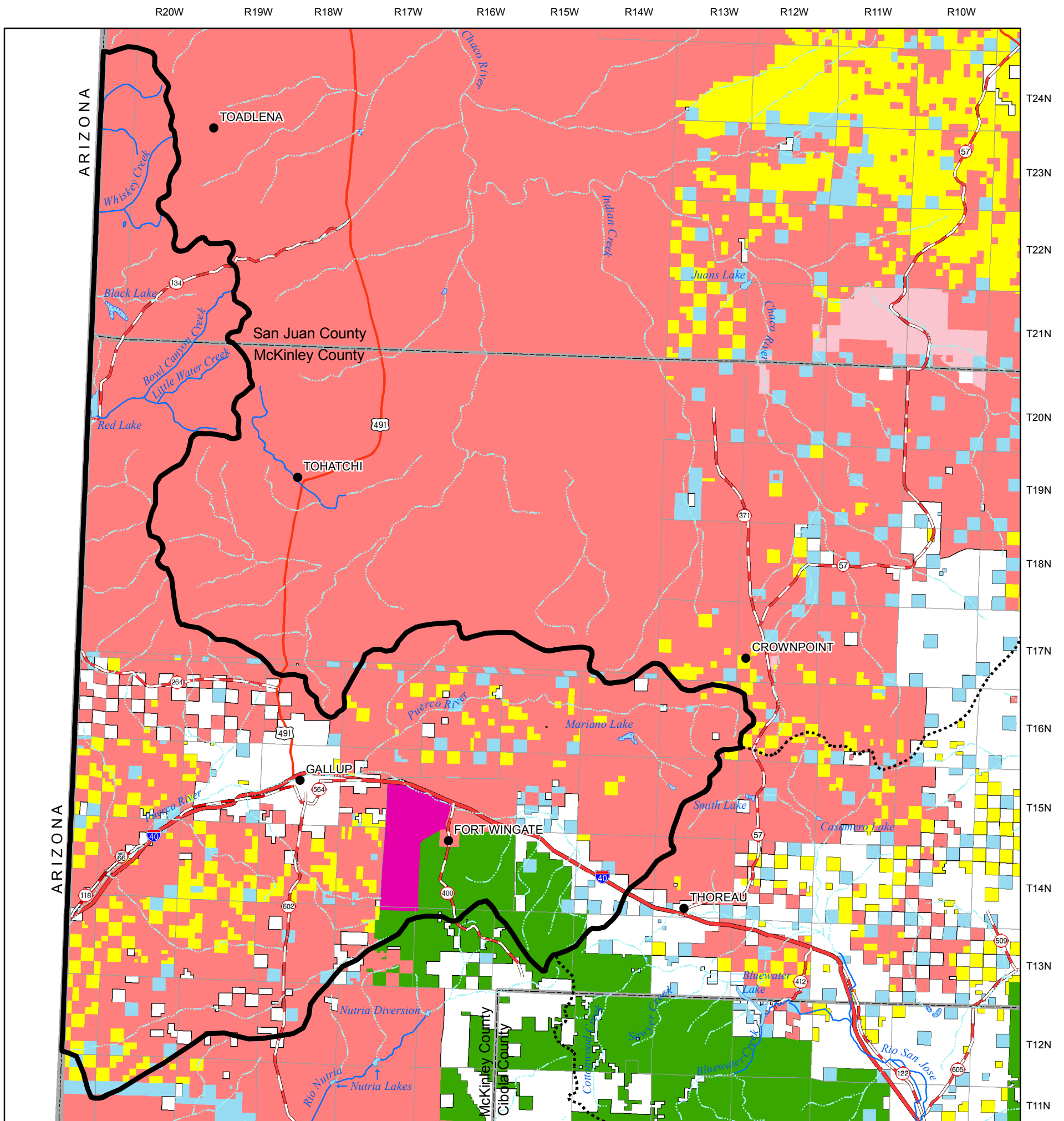


Northwest New Mexico Regional Water Plan Sub-Region C

Land Ownership



Legend		
●	City or Town	Perennial Stream
— (thick)	Interstate	Intermittent Stream
— (medium)	U.S. Highway	Perennial water body
— (thin)	State road or highway	Intermittent water body
— (dashed)	Planning Region	Land Ownership
— (dotted)	County Boundary	■ Yellow
— (dash-dot)	State Boundary	■ Green
— (dotted)	Township/Range	■ Blue
		■ Red
		■ Pink
		■ White
		■ Light Blue
		■ Dark Red
		■ Light Blue with wavy lines
		■ Purple
		■ Light Green
		■ Light Blue with dots
		■ Blue with wavy lines
		■ Blue with wavy lines and dots

Produced by New Mexico Water Resources Research Institute, May 2006

Base map prepared by the U.S. Geological Survey

Compiled from digital data provided by the New Mexico Resource Geographic Information System Program (RGIS). Original base maps digitized from 1:500,000 mylar sheets and 100,000 paper maps for New Mexico. These data meets National Mapping Accuracy Standards for 1:500,000 and 1:100,000 scale maps. Shaded relief provided by RGIS and is based on 1:250,000 Digital Elevation Models (DEMs) created by the U.S. Geological Survey. Boundary of the Northwest New Mexico Planning Region is based on surface drainage divides.

Projection: Universal Transverse Mercator, Zone 13, Units meters, NAD83.