

Northeast New Mexico Regional Water Plan (Northern Portion)

Land Use in the Region

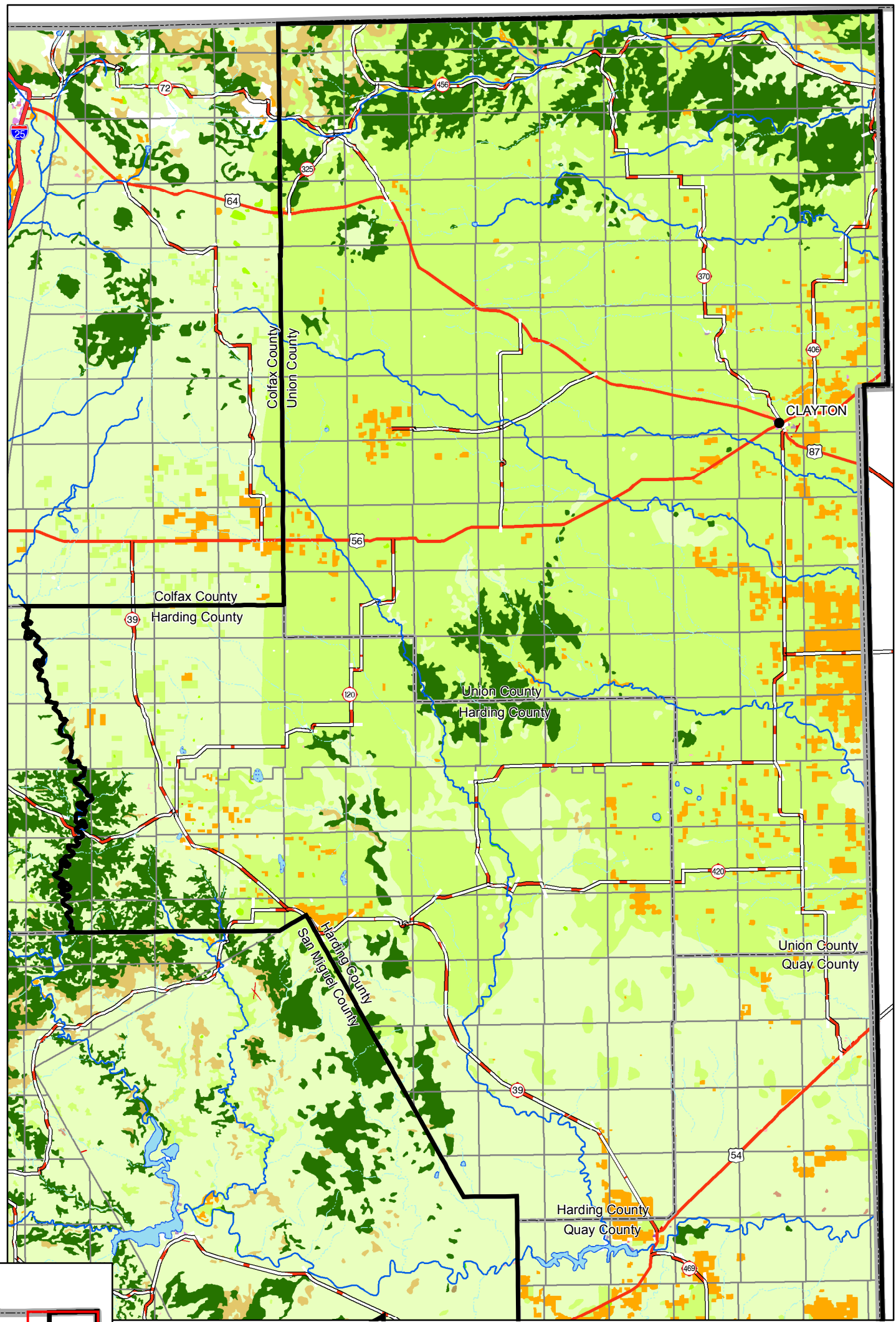
R 24E R 245E R 26E R 27E R 28E R 29E R 30E R 31E R 32E R 33E R 34E R 35E R 36E

Legend

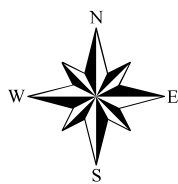
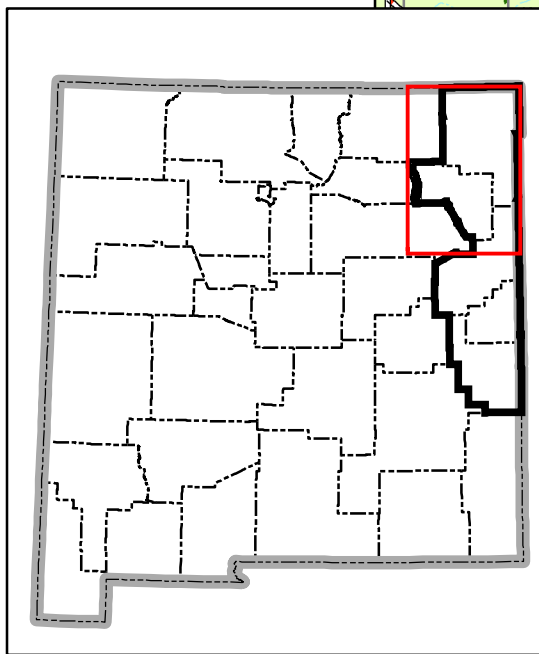
- City or Town
- ▭ Planning Region
- State Boundary
- County Boundary
- ~ Intermittent Stream
- ~ Perennial River
- ~ Intermittent water body
- ~ Perennial water body
- ~ Interstate
- ~ State Road or Highway
- ~ U.S. Highway
- ~ Township/Range

Land Use

- Bare Exposed Rock
- Dry Salt Flats
- Commercial and Services
- Confined Feeding Operations
- Cropland and Pasture
- Mixed Rangeland
- Herbaceous Rangeland
- Nonforested Wetland
- Forested Wetland
- Deciduous Forest Land
- Evergreen Forest Land
- Mixed Urban or Built-up Land
- Other Agricultural Land
- Other Urban or Built-up Land
- Sandy Areas Other Than Beaches
- Shrub-Brushland Rangeland
- Strip Mines, Quarries, and Gravel Pits
- Transitional Areas
- Transportation, Communications and Utilities



T 31N
T 30N
T 29N
T 28N
T 27N
T 26N
T 25N
T 24N
T 23N
T 22N
T 21N
T 20N
T 19N
T 18N
T 17N
T 16N
T 15N
T 14N
T 13N
T 12N



Produced by the New Mexico Water Resources Research Institute, May 2005

Base map prepared by the U.S. Geological Survey

Compiled from digital data provided by the New Mexico Resources Geographic Information System Program (RGIS). Original base maps digitized from 1:500,000 and 1:1,000,000 scale maps. Boundary of the Northeast New Mexico Water Planning Region is based on county lines and surface drainage divides. Land use coverage developed by USGS/EPA at 1:250,000 scale.

Horizontal accuracy: At the scale of 1:650,000 at least 90% of the points tested are within 1/30th inch (0.0333 inch), or within 547 ground meters, of their true location.

Projection: Universal Transverse Mercator, Zone 13, Units meters, NAD83.

