

# Middle Rio Grande Water Planning Region

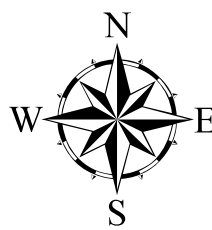
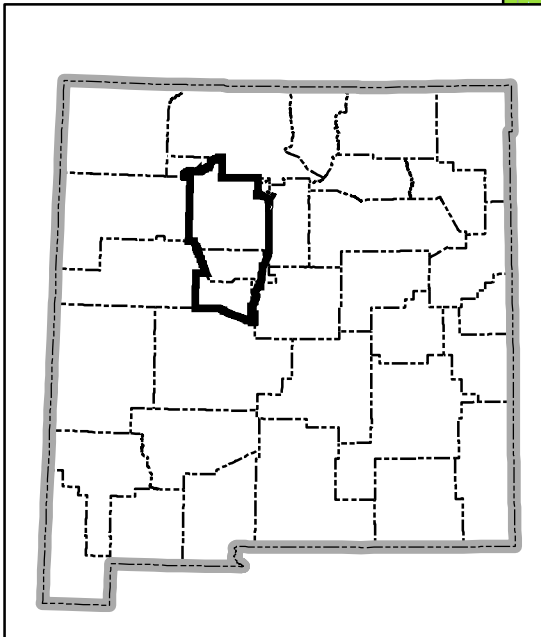
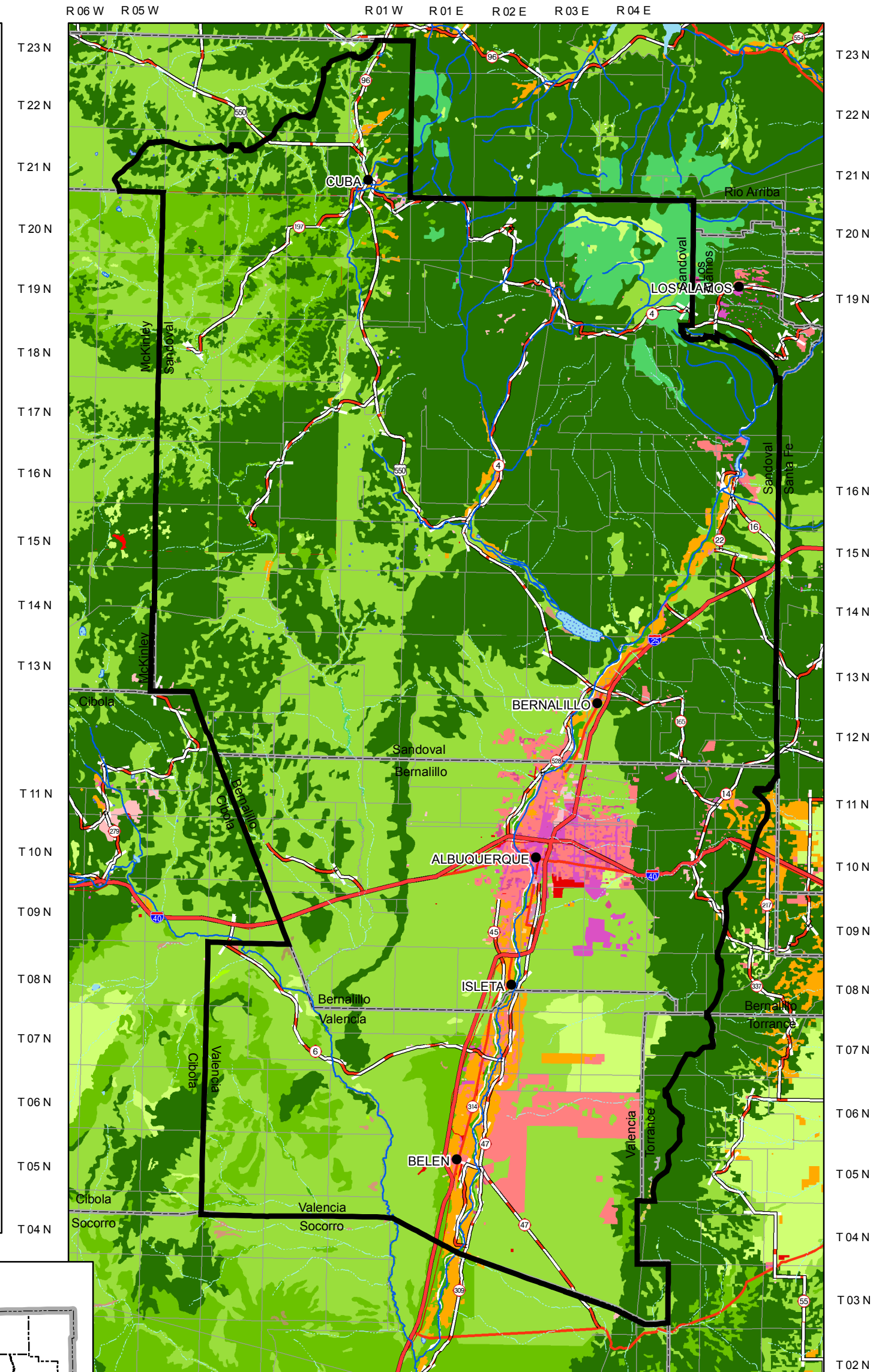
## Land Use in the Region

**Legend**

- Planning Region
- Intermittent water body
- Perennial water body
- Perennial
- Intermittent
- County Boundary
- Interstate
- State Highway
- U.S. Highway
- Township/Range

**Land Use**

- Bare Exposed Rock
- Bare Ground Tundra
- Mixed Trunda
- Wet Trunda
- Confined Feeding Operations
- Cropland and Pasture
- Deciduous Forest Land
- Dry Salt Flats
- Evergreen Forest Land
- Forested Wetland
- Herbaceous Rangeland
- Herbaceous Tundra
- Commercial and Services
- Industrial
- Industrial and Commercial Complexes
- Other Urban or Built-up Land
- Mixed Urban or Built-up Land
- Residential
- Mixed Barren Land
- Mixed Forest Land
- Mixed Rangeland
- Nonforested Wetland
- Orchards, Groves, etc.
- Other Agricultural Land
- Sandy Areas Other Than Beaches
- Shrub and Brush Tundra
- Shurb-Brushland Rangeland
- Strip Mines, Quarries, and Gravel Pits
- Transitional Areas
- Transportation, Communications and Utilities



0 12.5 25 50 Kilometers

0 12.5 25 50 Miles

Produced by New Mexico Water Resources Research Institute, August, 2005

Base map prepared by the U.S. Geological Survey

Compiled from digital data provided by the New Mexico Resource Geographic Information System Program (RGIS). Original base maps digitized from 1:500,000 mylar sheets and 100,000 paper maps for New Mexico. These data meets National Mapping Accuracy Standards for 1:500,000 and 1:100,000 scale maps. Landuse coverage developed by USGS/EPA at 1:250,000 scale. Boundary of the Middle Rio Grande Water Planning Region is based on New Mexico county boundaries, and surface drainage divides. The cadastral accuracy of the county boundaries where verified by the use of 1:100,000 Public Land Survey System (PLSS) from RGIS.

Horizontal accuracy: At the scale of 1:500,000 at least 90 percent of the points tested are within 1/30th inch (0.033 inch), or within 423 ground meters, of their true location.

Projection: Universal Transverse Mercator, Zone 13, Units meters, NAD83.