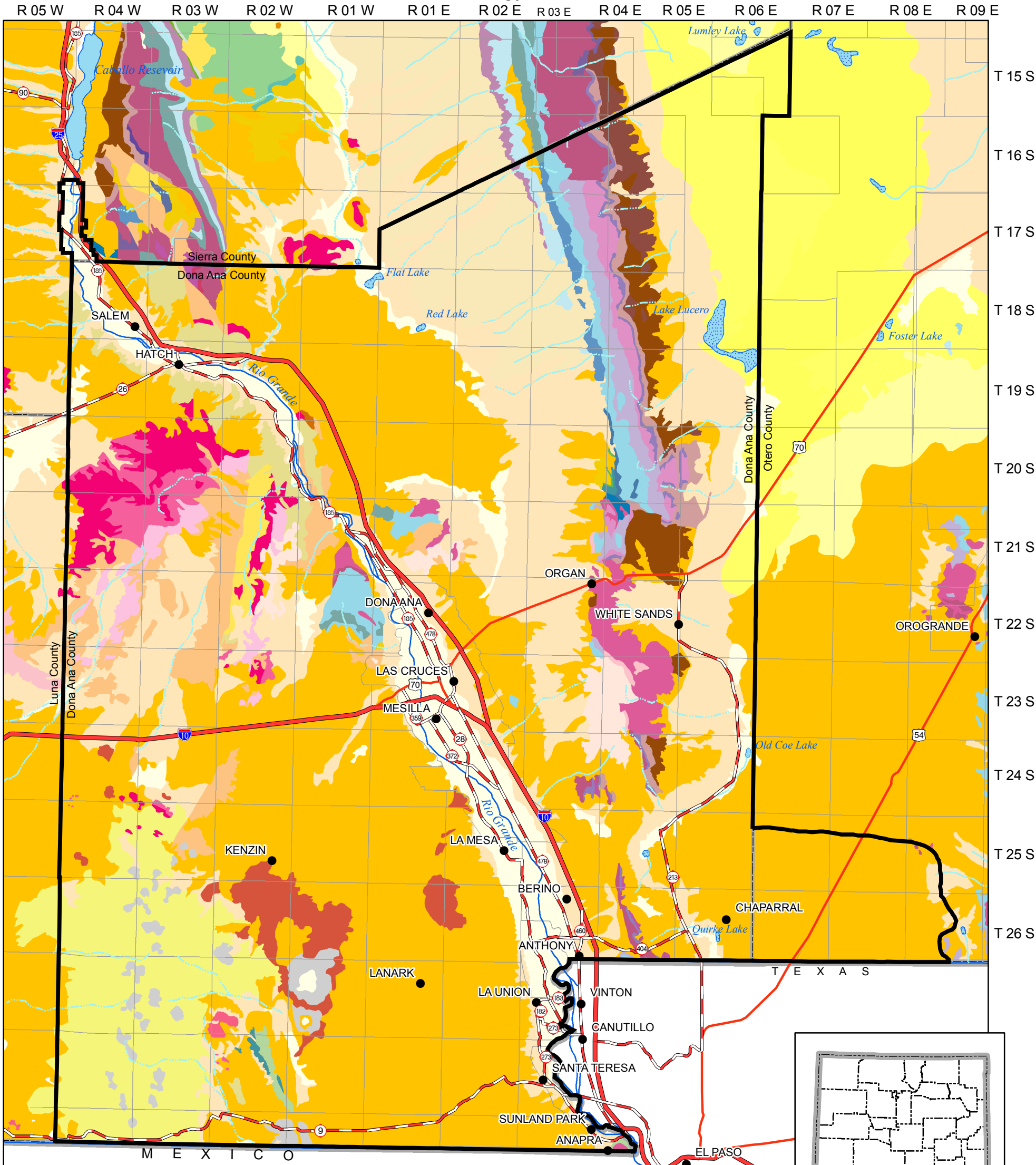


# Lower Rio Grande Water Users Organization

## Geology

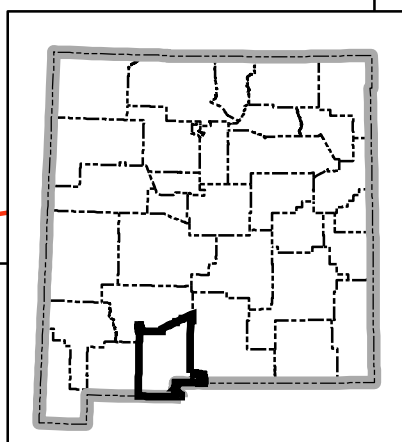


**Legend**

- City or Town
- ▭ Planning Region
- State Boundary
- County Boundary
- ~ Intermittent Stream
- ~ Perennial River
- ~ Intermittent water body
- ~ Perennial water body
- Ⓜ Interstate
- Ⓜ State Road or Highway
- Ⓜ U.S. Highway
- Township/Range

**Geology**

IP	OC	MC	Qa	Tla
IPlc	P	Qb	Qbo	Tli
IPps	PIP	Qc	Qe/QTs	Tlrf
D	Pa	Qd	Qe/Qpl	Tlrp
K	Pay	Qe	Qeg	Tlv
Kd	Ph	Qf	Qp	Tnb
Kdm	Psa	Qg	Qp/QTsf	Tos
Kl	Py	Qh	Qpl	Tps
Km	Pys	Qi	Qv	Tsf
Kmc	Pz	Qj	SO	Tual
Kmv	QTs	Qk	SOC	Xm
MD	QTsf	Ql	Ti	Xp
		Qm		Yp



Produced by New Mexico Water Resources Research Institute, April 2006.

Base map prepared by the U.S. Geological Survey

Compiled from digital data provided by the New Mexico Resource Geographic Information System Program (RGIS). Original base maps digitized from 1:500,000 mylar sheets and 100,000 paper maps for New Mexico. These data meets National Mapping Accuracy Standards for 1:500,000 and 1:100,000 scalemaps. Shaded relief provided by RGIS and is based on 1:250,000 Digital Elevation Models (DEMs) created by the U.S. Geological Survey. Boundary of the Lower Rio Grande Water Users Organization Planning Region is based on county lines and surface drainage divides.

Horizontal accuracy: At the scale of 1:650,000 at least 90 percent of the points tested are within 1/30th inch (0.0333 inch), or within 547 ground meters, of their true location.

Projection: Universal Transverse Mercator, Zone 13, Units meters, NAD83.

