

# Lea County Water Plan

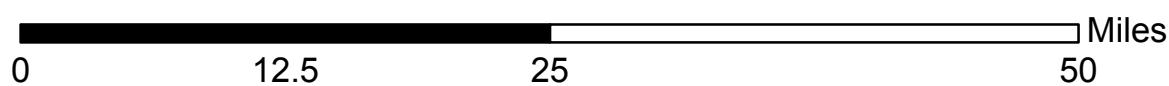
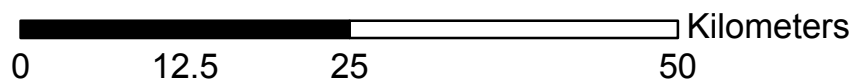
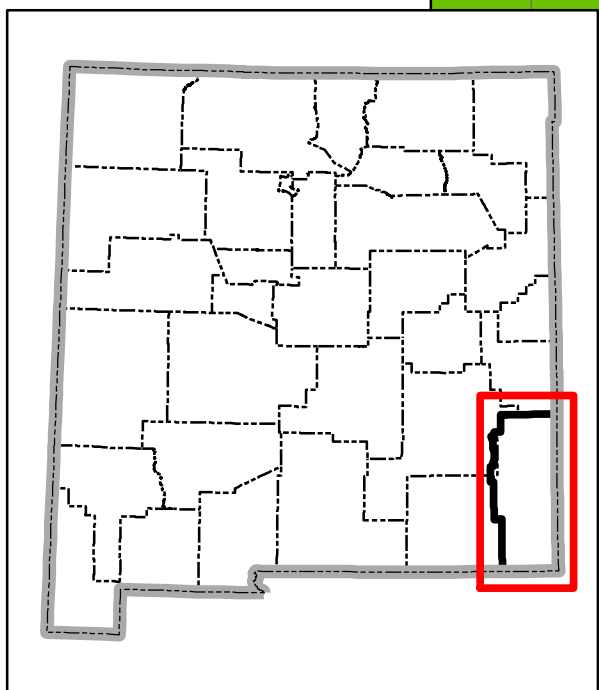
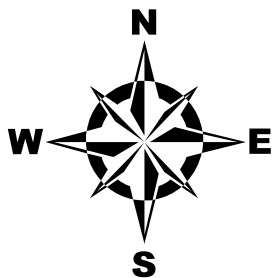
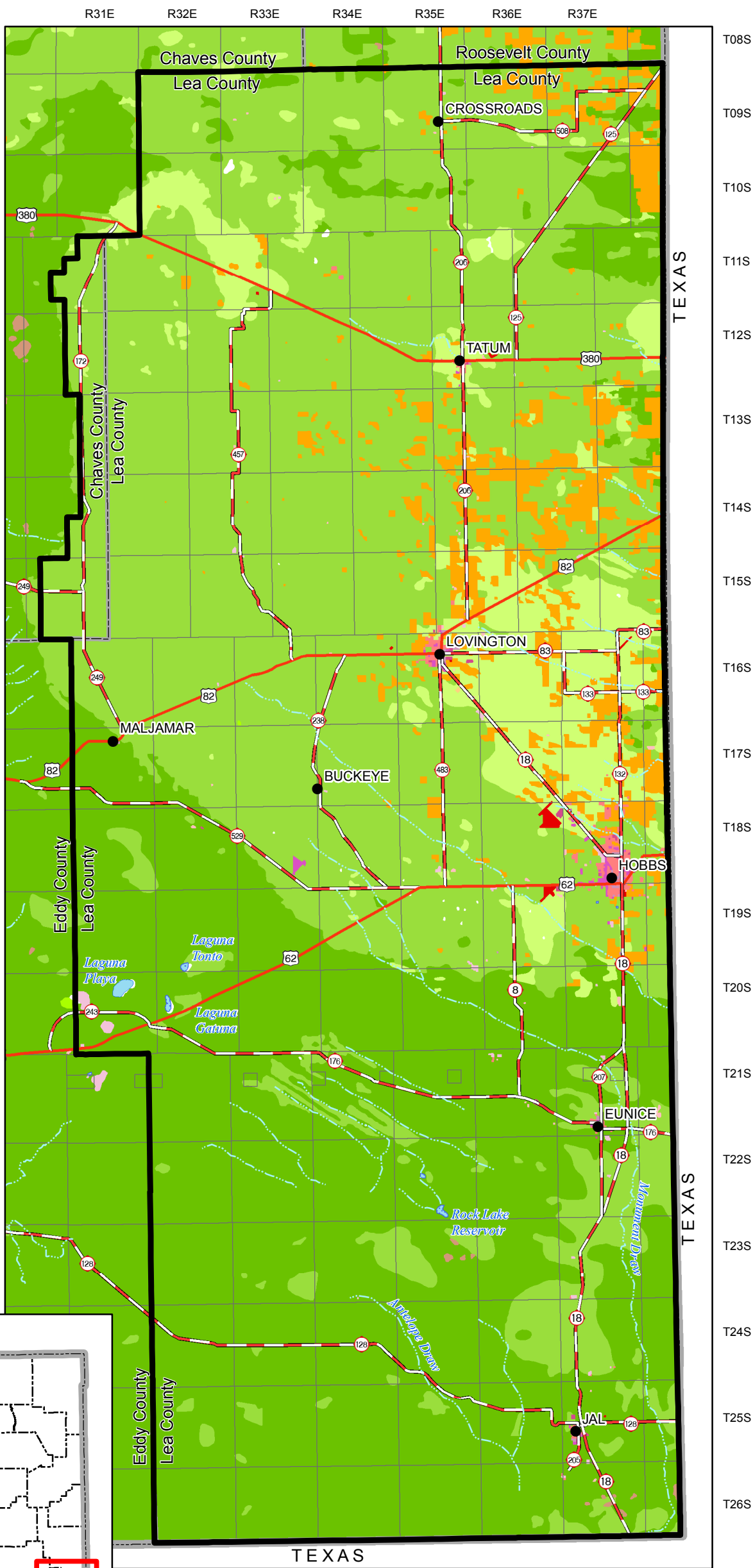
## Land Use

**Legend**

- City or Town
- State Boundary
- County Boundary
- State Road or Highway
- Interstate
- U.S. Highway
- Township/Range
- Perennial Stream
- Intermittent Stream
- Perennial water body
- Intermittent water body
- Planning Region

**Land Use**

- Reservoirs
- Confined Feeding Operations
- Cropland and Pasture
- Herbaceous Rangeland
- Commercial and Services
- Industrial
- Other Urban or Built-up Land
- Mixed Urban or Built-up Land
- Residential
- Mixed Rangeland
- Nonforested Wetland
- Other Agricultural Land
- Sandy Areas Other Than Beaches
- Shrub-Brushland Rangeland
- Strip Mines, Quarries, and Gravel Pits
- Transportation, Communications and Utilities



Produced by New Mexico Water Resources Research Institute, August 2006

Base map prepared by the U.S. Geological Survey

Compiled from digital data provided by the New Mexico Resource Geographic Information System Program (RGIS). Original base maps digitized from 1:500,000 mylar sheets and 100,000 paper maps for New Mexico. These data meets National Mapping Accuracy Standards for 1:500,000 and 1:100,000 scale maps. Shaded relief provided by RGIS and is based on 1:250,000 Digital Elevation Models (DEMs) created by the U.S. Geological Survey. Boundary of the Lea County Region Water Planning Region is based on surface drainage divides.

Horizontal accuracy: At the scale of 1:900,000 at least 90 percent of the points tested are within 1/30th inch (0.0333 inch), or within 762 ground meters, of their true location.  
Projection: Universal Transverse Mercator, Zone 13, Units meters, NAD83.