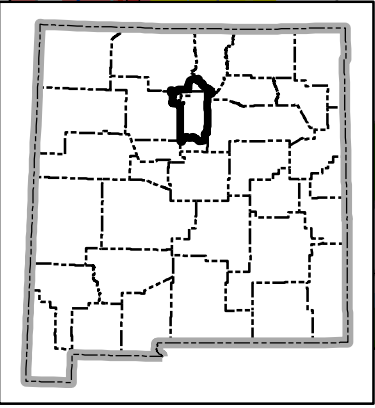
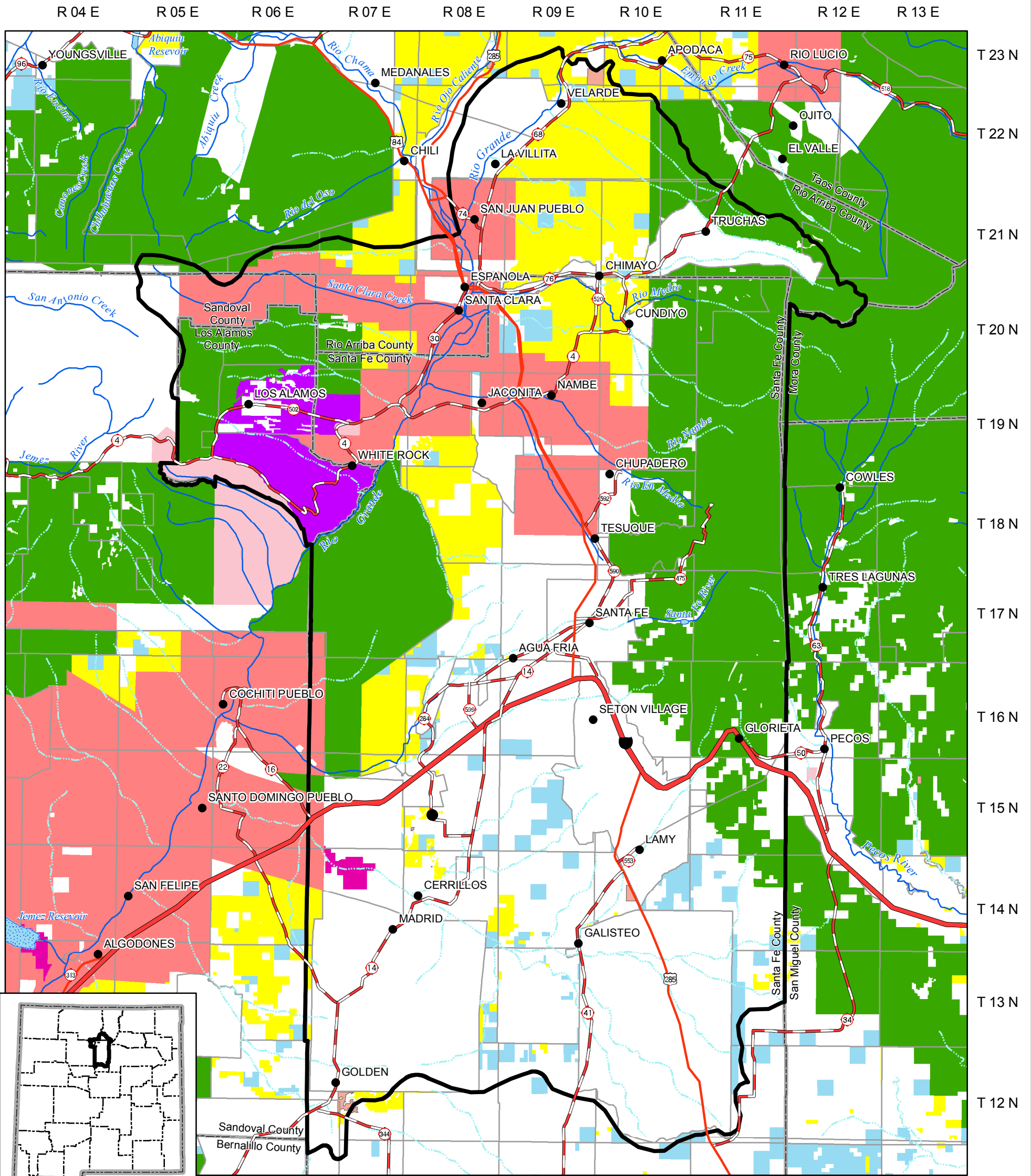


Jemez y Sangre Water Planning Counsel Land Ownership



Legend		Land Ownership	
•	City or Town	Yellow	Bureau of Land Management
▭	Planning Region	Orange	Bureau of Reclamation
—	County Boundary	Blue	Department of Agriculture
~	Perennial river	Pink	Department of Defense
~	Intermittent stream	Purple	Department of Energy
~	Intermittent water body	Green	Forest Service
~	Perennial water body	Light Blue	Fish and Wildlife Service
—	Interstate	Red	Indian
—	U.S. Highway	Light Pink	National Park Service
—	State Road or Highway	White	Private
—	Township/Range	Light Blue	State
		Dark Red	State Game and Fish
		Light Blue	State Park

Produced by New Mexico Water Resources Research Institute, May 2006.

Base map prepared by the U.S. Geological Survey

Compiled from digital data provided by the New Mexico Resource Geographic Information System (RGIS). Original base maps digitized from 1:500,000 mylar sheets and 100,000 paper maps for New Mexico. These data meets National Mapping Accuracy Standards for 1:500,000 and 1:100,000 scalemaps. Shaded relief provided by RGIS and is based on 1:250,000 Digital Elevation Models (DEMs) created by the U.S. Geological Survey. Boundary of the Jemez y Sangre Water Planning Counsel is based on county lines and surface drainage divides.

Horizontal accuracy: At the scale of 1:650,000 at least 90 percent of the points tested are within 1/30th inch (0.0333 inch), or within 547 ground meters, of their true location.

Projection: Universal Transverse Mercator, Zone 13, Units meters, NAD83.

